

### What it is

School performance data, helping governors to hold schools to account, support and challenge the leadership team and make more informed strategic decisions.

The Governor Dashboard is one of a series of dashboards in FFT Aspire – simple-to-use reports for school leaders, teachers and governors. They support rigorous self-evaluation, inspection preparation and in-depth planning.

### What it tells you

How does attainment and pupil progress at your school compare to the national average?

How are you performing in different subjects?

Do you have any under-performing groups of pupils?

How might the context of your school affect performance?

How does pupil attendance compare to the national average?

What are the strengths and weaknesses of your school?

Full interactive dashboards & help at [fftaspire.org](http://fftaspire.org)

### About the data shown

1 2 3

#### Actual results

Actual results for your school, using a range of measures such as averages and thresholds.



#### Gauges

These display headline indicators and whether actual results and pupils' progress are in line with, or significantly above or below, the national average.

#### Small cohorts

For small pupil cohorts we will suppress the data with an asterisk (\*). Where it is not possible to calculate a figure or if data is not available this will be shown by a dash (-).

ESTIMATED



1 2 3

#### Pupil progress

The value added progress that your pupils have made from one key stage to the next. FFT compares your actual results to the estimated results based on the progress of similar pupils nationally.



#### Statistical significance

Green plus signs and red minus signs highlight where either actual results or pupils' progress is significantly above or below the national average.

#### Data sources

Generated from FFT Aspire which includes data sourced from the DFE (National Pupil Database) and data calculated by FFT. The headline performance indicators will be consistent with RAISEonline and the DFE School Performance tables.



#### Trends

The dashboard analyses school performance over 3-5 years. Any significant year-on-year improvement is highlighted using an up arrow. Significant declines in performance are highlighted with a down arrow.



#### Strengths & weaknesses

These highlight key pupil groups and subjects where progress is above or below the national average.

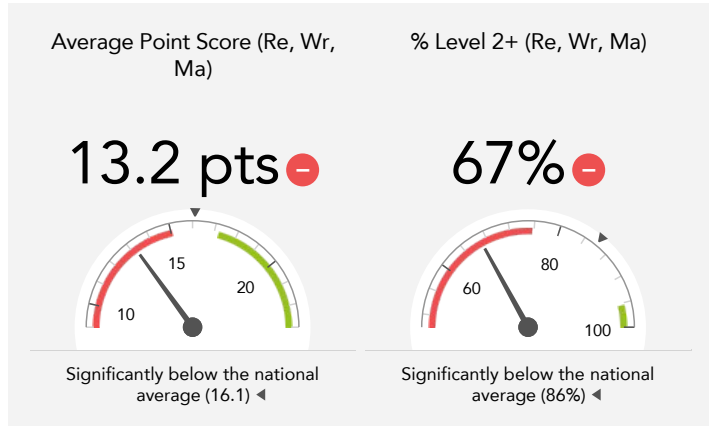
#### Working in partnership with



Overview

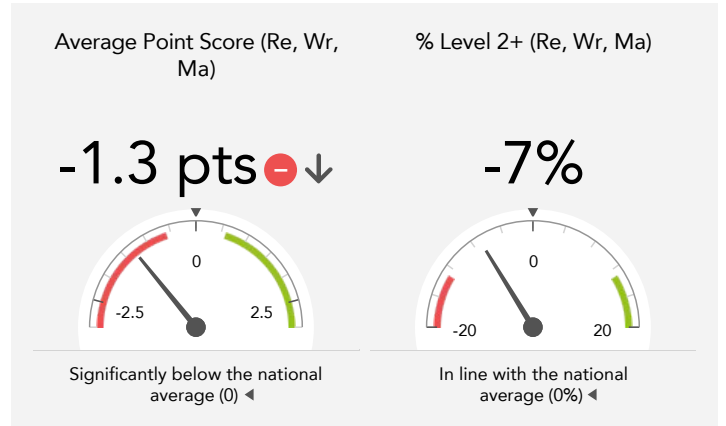
KS1 Attainment 2015 · Actual results

45 pupils



KS1 Progress 2015 · Value Added

44 matched pupils



KS1 higher and lower performing pupil groups 2015

	Higher performing	Lower performing
Overall achievement pupil progress	Black African (5)	SEN Support (8) - ↓ Higher attainers (12) - FSM (16) - ↓
KS1 reading achievement pupil progress	Black African (5)	SEN Support (8) - ↓ Higher attainers (12) - Female (15) - ↓
KS1 writing achievement pupil progress	Black African (5) First language not English (7)	SEN Support (8) - ↓ Higher attainers (12) - Female (15) -
KS1 mathematics achievement pupil progress		SEN Support (8) - ↓ FSM (16) - ↓ Male (29) - ↓

Using FFT Aspire dashboards



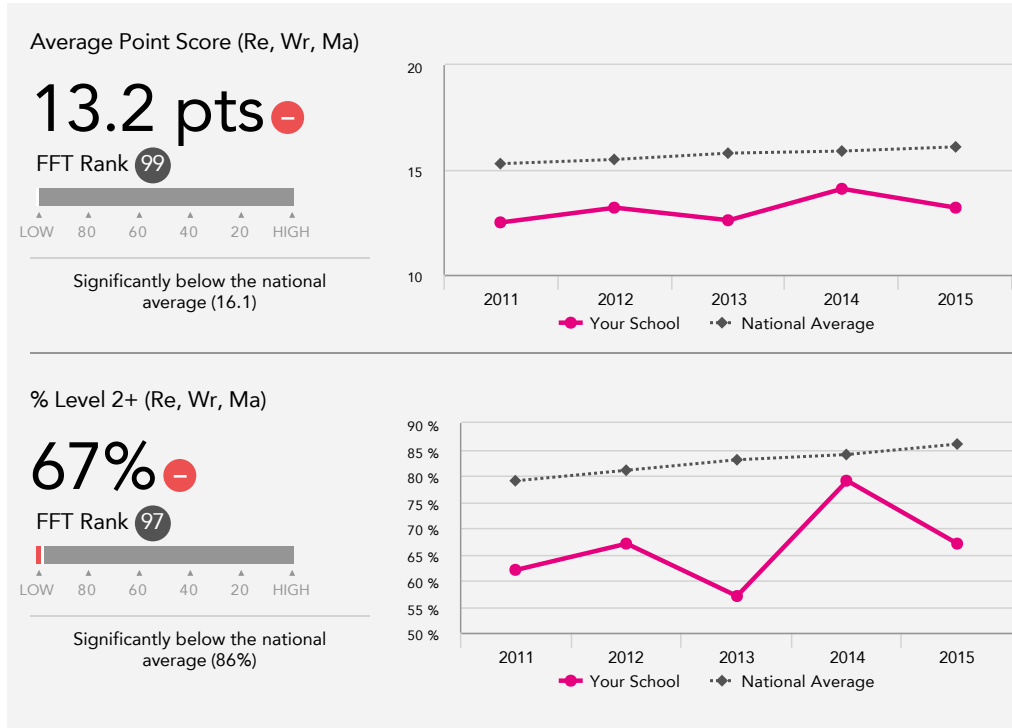
The dashboard provides an overview of performance in your school based on your actual results (**attainment**) and the value added pupil progress that pupils have made from one key stage to the next (**progress**).

The dashboard also provides a simple comparison of school performance against national averages. For value added progress measures, this comparison is based on the average progress made by similar pupils across the country. By 'similar pupils' we mean pupils with similar prior attainment, gender and month of birth.

## Attainment & progress

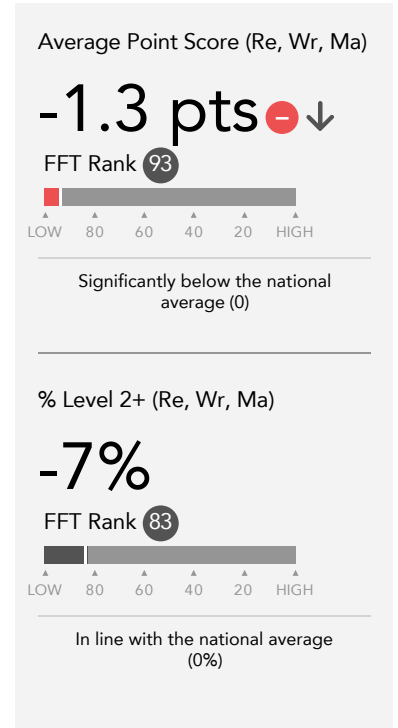
### KS1 Attainment 2015

45 pupils



### KS1 Progress 2015

44 matched pupils



### KS1 performance summary

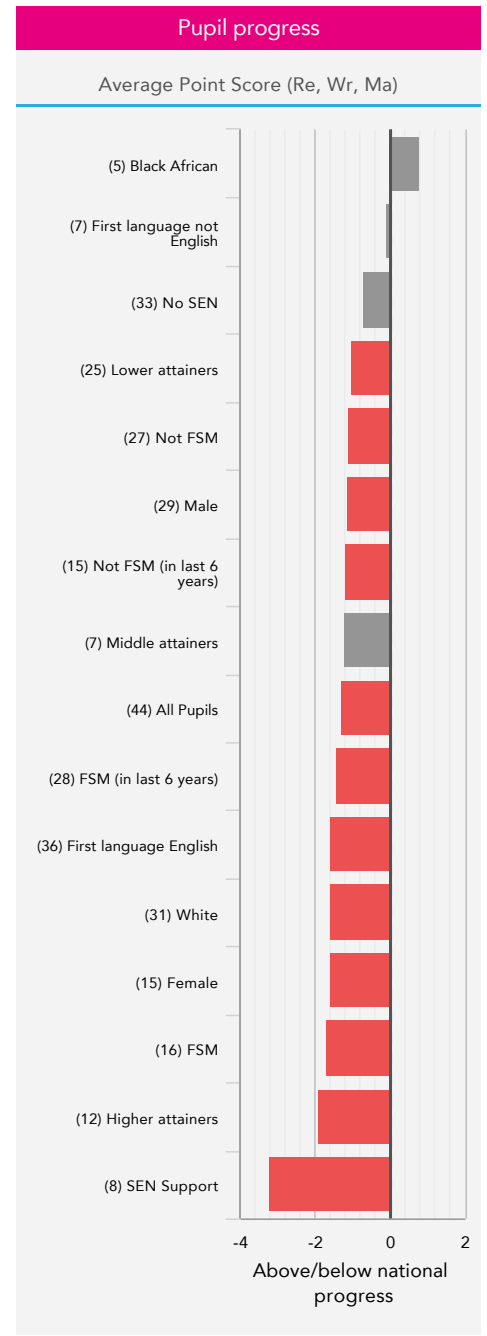
	Actual results			Pupil progress		
	2013	2014	2015	2013	2014	2015
Number of Pupils / % Matched	44	42	45	98%	95%	98%
Average level (Re, Wr, Ma)	2C -	2B -	2C -	-0.2 -↓	-0.0 ↑	-0.2 -↓
Average Point Score (Re, Wr, Ma)	12.6 -	14.1 -	13.2 -	-1.3 -↓	-0.1 ↑	-1.3 -↓
% Level 2+ (Re, Wr, Ma)	57% -	79% ↑	67% -	-12%	+6%	-7%
% Level 2B+ (Re, Wr, Ma)	34% -	48% -	51% -	-11% ↓	+0%	-1%
% Level 3+ (Re, Wr, Ma)	0%	0% -	2% -	-6%	-3%	-6%
Average Point Score Reading	13.5 -	14.7 -	13.6 -	-0.9 -↓	+0.1 ↑	-1.2 -↓
% Level 2+ Reading	75%	86%	73%	-2%	+5%	-8%
% Level 3+ Reading	9% -	5% -	7% -	-8%	-9%	-14% -
Average Point Score Writing	11.7 -	13.4 -	12.6 -	-1.4 -↓	-0.0 ↑	-1.0 -
% Level 2+ Writing	61% -	81% ↑	71% -	-11%	+5%	-5%
% Level 3+ Writing	0% -	0% -	2% -	-9%	-6%	-8%
Average Point Score Maths	12.6 -	14.1 -	13.3 -	-1.6 -↓	-0.3 ↑	-1.5 -↓
% Level 2+ Maths	70%	86%	73%	-11%	-1%	-12% -
% Level 3+ Maths	2% -	0% -	4% -	-10% -	-10%	-14% -

## Pupil groups

### KS1 Pupil groups performance 2015

	Pupils	Actual results			Pupil progress		
		Average Point Score (Re, Wr, Ma)	% Level 2+ (Re, Wr, Ma)	% Level 3+ (Re, Wr, Ma)	Average Point Score (Re, Wr, Ma)	% Level 2+ (Re, Wr, Ma)	% Level 3+ (Re, Wr, Ma)
<b>Summary</b> All Pupils	45	13.2 <span style="color:red">⬇</span>	67% <span style="color:red">⬇</span>	2% <span style="color:red">⬇</span>	-1.3 <span style="color:red">⬇</span>	-7%	-6%
<b>Gender</b> Male	30	12.9 <span style="color:red">⬇</span>	67% <span style="color:red">⬇</span>	3%	-1.1 <span style="color:red">⬇</span>	-3%	-2%
Female	15	13.8 <span style="color:red">⬇</span>	67%	0%	-1.6 <span style="color:red">⬇</span>	-16%	-13%
<b>Prior Attainment</b> Higher attainers	12	16.0 <span style="color:red">⬇</span>	92%	8%	-1.9 <span style="color:red">⬇</span>	-7%	-17%
Middle attainers	7	15.1	86%	0%	-1.2	-9%	-6%
Lower attainers	25	11.7 <span style="color:red">⬇</span>	52%	0%	-1.0 <span style="color:red">⬇</span>	-7%	-1%
<b>Pupil Premium</b> FSM (in last 6 years)	28	13.0 <span style="color:red">⬇</span>	64%	4%	-1.4 <span style="color:red">⬇</span>	-10%	-3%
Not FSM (in last 6 years)	15	14.3 <span style="color:red">⬇</span>	80%	0%	-1.2 <span style="color:red">⬇</span>	-2%	-12%
<b>FSM</b> FSM	16	12.6	56%	0%	-1.7 <span style="color:red">⬇</span>	-18%	-6%
Not FSM	27	14.0 <span style="color:red">⬇</span>	78%	4%	-1.1 <span style="color:red">⬇</span>	-0%	-6%
<b>SEN Group</b> SEN Support	8	9.4 <span style="color:red">⬇</span>	13%	0%	-3.2 <span style="color:red">⬇</span>	-48%	-1%
EHC Plan	*	*	*	*	*	*	*
No SEN	33	14.9 <span style="color:red">⬇</span>	88%	3%	-0.7	+5%	-7%
<b>EAL</b> First language not English	7	13.7	71%	0%	-0.1	+5%	-3%
First language English	36	13.4 <span style="color:red">⬇</span>	69%	3%	-1.6 <span style="color:red">⬇</span>	-9%	-7%
<b>Ethnicity</b> White	31	13.7 <span style="color:red">⬇</span>	71%	3%	-1.6 <span style="color:red">⬇</span>	-10%	-7%
Black Caribbean	*	*	*	*	*	*	*
Black African	5	14.9	80%	0%	+0.8	+13%	-2%
Pakistani	*	*	*	*	*	*	*
Other Asian	*	*	*	*	*	*	*
Chinese	*	*	*	*	*	*	*
Any Other	*	*	*	*	*	*	*
No Ethnicity Data	*	*	*	*	*	*	*

### KS1 Progress 2015



## Subjects

### KS1 subject performance 2015

	Actual results			Pupil progress			Actual results over time
	2013	2014	2015	2013	2014	2015	
Number of Pupils / % Matched	44	42	45	98%	95%	98%	
<b>Reading</b>							
% Level 2+	75%	86%	73%	-2%	+5%	-8%	
% Level 2B+	52% <span style="color:red">⬇️</span>	76% <span style="color:green">⬆️</span>	62% <span style="color:red">⬇️</span>	-9%	+10%	-7%	
% Level 3+	9% <span style="color:red">⬇️</span>	5% <span style="color:red">⬇️</span>	7% <span style="color:red">⬇️</span>	-8%	-9%	-14% <span style="color:red">⬇️</span>	
Average level	2C <span style="color:red">⬇️</span>	2B <span style="color:red">⬇️</span>	2C <span style="color:red">⬇️</span>	-0.1 <span style="color:red">⬇️</span>	+0.0 <span style="color:green">⬆️</span>	-0.2 <span style="color:red">⬇️</span>	
Average Point Score	13.5 <span style="color:red">⬇️</span>	14.7 <span style="color:red">⬇️</span>	13.6 <span style="color:red">⬇️</span>	-0.9 <span style="color:red">⬇️</span>	+0.1 <span style="color:green">⬆️</span>	-1.2 <span style="color:red">⬇️</span>	
<b>Writing</b>							
% Level 2+	61% <span style="color:red">⬇️</span>	81% <span style="color:green">⬆️</span>	71% <span style="color:red">⬇️</span>	-11%	+5%	-5%	
% Level 2B+	39% <span style="color:red">⬇️</span>	50% <span style="color:red">⬇️</span>	60%	-10% <span style="color:red">⬇️</span>	-3%	+5%	
% Level 3+	0% <span style="color:red">⬇️</span>	0% <span style="color:red">⬇️</span>	2% <span style="color:red">⬇️</span>	-9%	-6%	-8%	
Average level	1 <span style="color:red">⬇️</span>	2C <span style="color:red">⬇️</span>	2C <span style="color:red">⬇️</span>	-0.2 <span style="color:red">⬇️</span>	-0.0 <span style="color:green">⬆️</span>	-0.2 <span style="color:red">⬇️</span>	
Average Point Score	11.7 <span style="color:red">⬇️</span>	13.4 <span style="color:red">⬇️</span>	12.6 <span style="color:red">⬇️</span>	-1.4 <span style="color:red">⬇️</span>	-0.0 <span style="color:green">⬆️</span>	-1.0 <span style="color:red">⬇️</span>	
<b>Maths</b>							
% Level 2+	70%	86%	73%	-11%	-1%	-12% <span style="color:red">⬇️</span>	
% Level 2B+	52% <span style="color:red">⬇️</span>	69%	56% <span style="color:red">⬇️</span>	-10%	+3%	-13%	
% Level 3+	2% <span style="color:red">⬇️</span>	0% <span style="color:red">⬇️</span>	4% <span style="color:red">⬇️</span>	-10% <span style="color:red">⬇️</span>	-10%	-14% <span style="color:red">⬇️</span>	
Average level	2C <span style="color:red">⬇️</span>	2B <span style="color:red">⬇️</span>	2C <span style="color:red">⬇️</span>	-0.3 <span style="color:red">⬇️</span>	-0.1 <span style="color:green">⬆️</span>	-0.3 <span style="color:red">⬇️</span>	
Average Point Score	12.6 <span style="color:red">⬇️</span>	14.1 <span style="color:red">⬇️</span>	13.3 <span style="color:red">⬇️</span>	-1.6 <span style="color:red">⬇️</span>	-0.3 <span style="color:green">⬆️</span>	-1.5 <span style="color:red">⬇️</span>	
<b>Speaking and Listening</b>							
% Level 2+	75%	79%	78%	-2%	-3%	-2%	
% Level 3+	0% <span style="color:red">⬇️</span>	5% <span style="color:red">⬇️</span>	4% <span style="color:red">⬇️</span>	-12% <span style="color:red">⬇️</span>	-5%	-12% <span style="color:red">⬇️</span>	
Average level	2 <span style="color:red">⬇️</span>	2 <span style="color:red">⬇️</span>	2 <span style="color:red">⬇️</span>	-0.1 <span style="color:red">⬇️</span>	-0.1	-0.2 <span style="color:red">⬇️</span>	
Average Point Score	13.2 <span style="color:red">⬇️</span>	13.7 <span style="color:red">⬇️</span>	13.4 <span style="color:red">⬇️</span>	-0.8 <span style="color:red">⬇️</span>	-0.4	-0.9 <span style="color:red">⬇️</span>	
<b>Science</b>							
% Level 2+	73%	79%	73%	-7%	-7%	-9%	
% Level 3+	0% <span style="color:red">⬇️</span>	0% <span style="color:red">⬇️</span>	0% <span style="color:red">⬇️</span>	-11%	-9%	-16% <span style="color:red">⬇️</span>	
Average level	2 <span style="color:red">⬇️</span>	2 <span style="color:red">⬇️</span>	2 <span style="color:red">⬇️</span>	-0.2 <span style="color:red">⬇️</span>	-0.1 <span style="color:red">⬇️</span>	-0.2 <span style="color:red">⬇️</span>	
Average Point Score	12.6 <span style="color:red">⬇️</span>	13.5 <span style="color:red">⬇️</span>	12.8 <span style="color:red">⬇️</span>	-1.4 <span style="color:red">⬇️</span>	-0.7 <span style="color:red">⬇️</span>	-1.5 <span style="color:red">⬇️</span>	

## Context

### Context · Year 2 · 2014 / 2015

		Pupils	Proportion	
			School	National
<b>Summary</b>	All Pupils	42	100%	100%
<b>Gender</b>	Male	27	64%	51%
	Female	15	36%	49%
<b>Prior Attainment</b>	Higher attainers	12	29%	35%
	Middle attainers	7	17%	33%
	Lower attainers	23	55%	29%
<b>Pupil Premium</b>	FSM (in last 6 years)	27	64%	25%
	Not FSM (in last 6 years)	15	36%	75%
<b>FSM</b>	FSM	15	36%	17%
	Not FSM	27	64%	83%
<b>SEN Group</b>	SEN Support	7	17%	14%
	EHC Plan	*	*	*
	No SEN	33	79%	84%
<b>EAL</b>	First language not English	7	17%	20%
	First language English	35	83%	80%
<b>Ethnicity</b>	White	30	71%	75%
	Black Caribbean	*	*	*
	Black African	5	12%	5%
	Pakistani	*	*	*
	Other Asian	*	*	*
	Chinese	*	*	*
	Any Other	*	*	*
	No Ethnicity Data	*	*	*

### Absence · Year 2 · Autumn 2014 & Spring 2015

		Pupils	Absence		Persistent absentees	
			School	National	School	National
<b>Summary</b>	All Pupils	42	7%	5%	7%	3%
<b>Gender</b>	Male	27	8%	5%	11%	3%
	Female	15	6%	5%	0%	3%
<b>Prior Attainment</b>	Higher attainers	12	5%	4%	0%	1%
	Middle attainers	7	4%	5%	0%	2%
	Lower attainers	23	10%	6%	13%	5%
<b>Pupil Premium</b>	FSM (in last 6 years)	27	7%	6%	11%	6%
	Not FSM (in last 6 years)	15	7%	4%	0%	1%
<b>FSM</b>	FSM	15	8%	7%	7%	8%
	Not FSM	27	7%	4%	7%	2%
<b>SEN Group</b>	SEN Support	7	6%	6%	0%	6%
	EHC Plan	*	*	*	*	*
	No SEN	33	7%	4%	9%	2%
<b>EAL</b>	First language not English	7	9%	6%	0%	3%
	First language English	35	7%	5%	9%	3%
<b>Ethnicity</b>	White	30	6%	5%	3%	3%
	Black Caribbean	*	*	*	*	*
	Black African	5	9%	4%	0%	2%
	Pakistani	*	*	*	*	*
	Other Asian	*	*	*	*	*
	Chinese	*	*	*	*	*
	Any Other	*	*	*	*	*
	No Ethnicity Data	*	*	*	*	*